

Dalrymple Bay Coal Terminal Performance Indicators

Jul 2011 to Sep 2011

System Delivery

No of Trains Delivered to the Terminal

	Units	July	August	September	YEJ 12
Actual	trains	389	445	434	1268
Scheduled	trains	392	448	431	1271

No of Tonnes to be Delivered to the Terminal

Actual	tonnes	3,926,909	4,394,052	4,277,045	12,598,006
Scheduled	tonnes	3,841,600	4,390,400	4,223,800	12,455,800

Inloading Performance

Combined Avg Terminal Unload Time

hrs:min	2:30	2:22	2:15	2:22
---------	------	------	------	------

Combined Avg Train Unload Time

hrs:min	2:02	1:56	1:56	1:58
---------	------	------	------	------

Yard Performance

Average Stock Build Time / Parcel

days	3.6	3.6	3.6	3.0
------	-----	-----	-----	-----

Average Stock Residence Time / Parcel

days	1.0	1.0	1.0	1.5
------	-----	-----	-----	-----

Outloading 1 Performance - L5

Utilisation

%	47.5%	48.7%	31.0%	42.6%
---	-------	-------	-------	-------

Average Outloading Rate

tph	4439	4589	4506	4510
-----	------	------	------	------

Outloading 2 Performance - L6

Utilisation

%	47.1%	49.8%	18.6%	39.0%
---	-------	-------	-------	-------

Average Outloading Rate

tph	4606	4553	3401	4084
-----	------	------	------	------

Outloading 3 Performance - L15

Utilisation

%	64.3%	56.7%	37.1%	53.0%
---	-------	-------	-------	-------

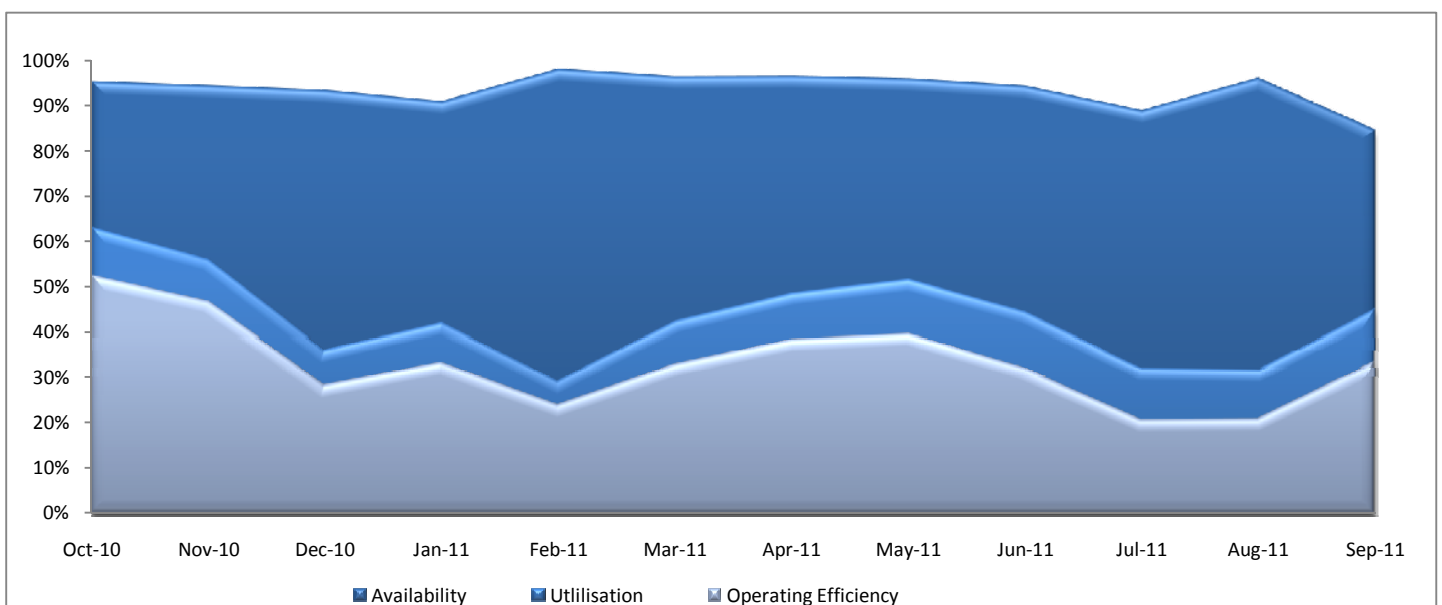
Average Outloading Rate

tph	4724	4740	4804	4755
-----	------	------	------	------

Average Outloading Rates

Handy	tph	3898	3430	0	3531
Panamax	tph	4544	3980	4849	4436
Japmax	tph	5201	4825	4877	4986
Cape	tph	4459	5061	4932	4811

Operating Efficiency Inloading



Dalrymple Bay Coal Terminal Performance Indicators

Jul 2011 to Sep 2011

Vessel Performance

Number of Vessels

Units

July

August

September

YEJ 12

Vessel Mix

Handy	Ships	2	7	0	9
Panamax	Ships	12	13	12	37
Japmax	Ships	7	6	4	17
Cape	Ships	17	18	20	55

Number of Parcels Per Vessel

Handy	parcels/vessel	1.0	1.1	0.0	1.1
Panamax	parcels/vessel	1.3	1.2	1.0	1.1
Japmax	parcels/vessel	1.1	1.3	1.0	1.2
Cape	parcels/vessel	2.8	2.6	2.6	2.6

Vessel Mix

Handy	%	2.5%	7.8%	0.0%	3.6%	
Panamax	%	22.8%	19.3%	21.7%	21.3%	
Japmax	%	14.0%	11.6%	8.4%	11.4%	
Cape	%	60.7%	61.3%	69.9%	63.8%	
Total Tonnes		t	3,937,791	4,351,543	3,908,605	12,197,939

Vessel Queuing

Average Daily Total Vessels in Queue	Vessels	13.5	15.8	18.2	15.8
Average Daily Vessels with Unavailable Cargo	Vessels	22.5	10.4	13.0	10.9
Average Days at Anchor	days	12.4	11.0	15.7	12.9

** Unavailable Cargo: Any vessel in the queue that does not have all parcels/products available at the mine/s.

Operating Efficiency Outloading

