

Performance Indicators

System Delivery

	Units	October	November	December	YTD
No of Trains Delivered to the Terminal					
Actual	trains	628	631	659	3658
Scheduled	trains	709	706	725	3968
No of Tonnes to be Delivered to the Terminal					
Actual	tonnes	6,148,875	6,190,039	6,459,822	36,125,170
Scheduled	tonnes	7,160,900	7,130,600	7,322,500	40,076,800

Inloading Performance

Average Terminal Unload Time	hrs:min	2:11	2:10	2:15	2:11
Average Train Unload Time	hrs:min	1:46	1:45	1:49	1:46

Yard Performance

Average Build Time / Parcel	days	3.1	3.4	3.3	3.3
Average Residence Time / Parcel	days	1.3	1.6	2.2	1.5

Outloading 1 Performance - L5

Utilisation	%	65.9%	84.1%	57.5%	70.4%
Average Outloading Rate	tph	4511	4300	4199	4333

Outloading 2 Performance - L6

Utilisation	%	63.6%	78.5%	63.8%	65.7%
Average Outloading Rate	tph	4576	4379	4596	4568

Outloading 3 Performance - L15

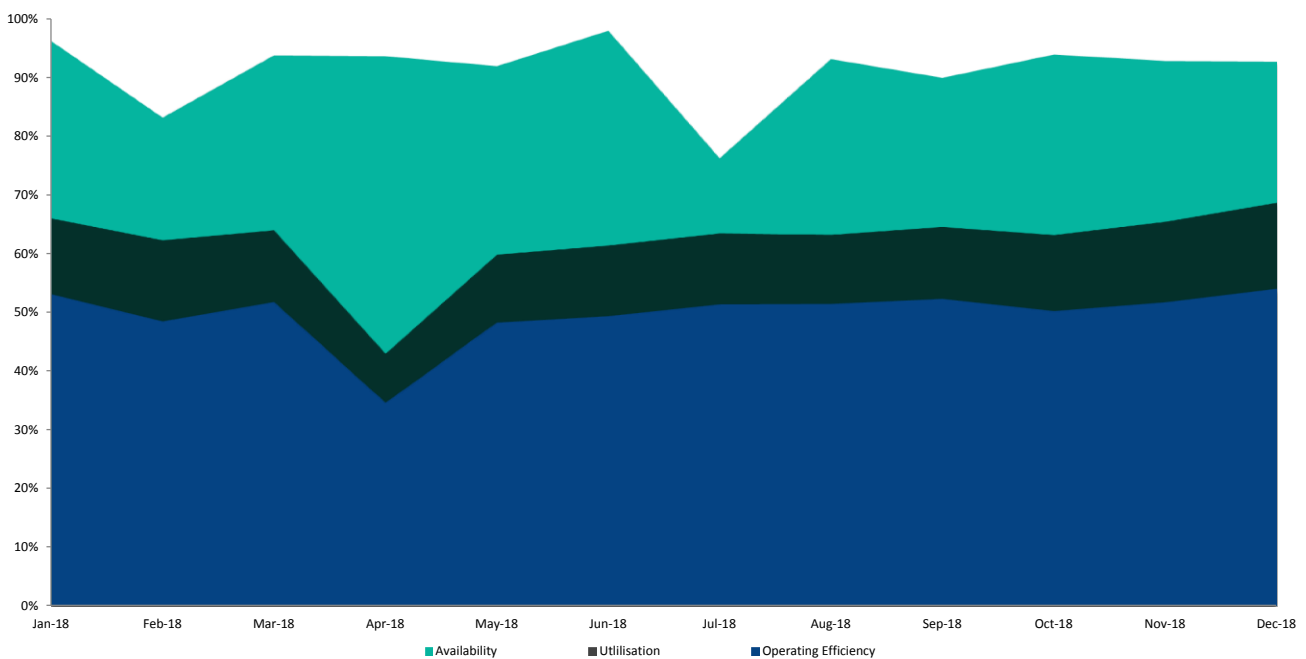
Utilisation	%	72.1%	83.4%	77.3%	77.6%
Average Outloading Rate	tph	5106	4473	4660	5124

***Utilisation is a measurement of an entire system string. e.g. Outloading 1 to Shiploader 1.*

Average Outloading Gross Rates

Handy	tph	3600	0	3079	3437
Panamax	tph	3970	3933	4086	4284
Japmax	tph	4565	4453	4623	4660
Cape	tph	4959	4431	4620	4878

Operating Efficiency Inloading



Performance Indicators

Operational Performance

Environmental Licence Performance

	Per Qtr	September	October	November	YTD
Dust Deposition Exceedance	Nil	Nil	Nil	Nil	Nil
Total Suspended Particulates Exceedance	Nil	Nil	Nil	Nil	Nil
Noise Levels Exceedance	Nil	Nil	Nil	Nil	Nil

NB: Receipt of validated noise and dust deposition data is generally one month behind.

Vessel Performance

Number of Vessels

Vessel Mix

	Units	October	November	December	YTD
Handy	Ships	3	0	4	12
Panamax	Ships	6	12	7	54
Japmax	Ships	25	26	25	162
Cape	Ships	23	21	25	128

Number of Parcels Per Vessel

Handy	parcels/vessel	1.0	0.0	1.5	1.3
Panamax	parcels/vessel	1.2	1.2	1.1	1.2
Japmax	parcels/vessel	1.3	1.3	1.2	1.2
Cape	parcels/vessel	2.0	2.3	2.0	2.1

Vessel Mix

Handy	%	2.7%	0.0%	3.1%	1.6%
Panamax	%	7.4%	13.2%	7.7%	10.2%
Japmax	%	34.2%	34.8%	32.4%	36.4%
Cape	%	55.7%	51.9%	56.8%	51.9%

Total Tonnes

t	5,905,978	6,110,038	6,295,109	35,805,994
---	-----------	-----------	-----------	------------

Vessel Queuing

Average Daily Total Vessels in Queue	Vessels	34.3	40.2	43.8	37.8
Average Daily Vessels with Unavailable Cargo	Vessels	1.0	1.1	4.0	5.7
Average Days at Anchor	days	16.9	21.4	22.9	19.2
Average Days at Anchor after Coal is Available	days	15.1	20.9	20.4	15.8

*** Unavailable Cargo: Any vessel in the queue that does not have all parcels/products available at the mine/s.*

***Weightometer tonnes are used in this report and cut-offs are last wagon and last coal for inloading and outloading respectively*

Operating Efficiency Outloading

