

Performance Indicators

Operational Performance

System Delivery

No of Trains Delivered to the Terminal

	Units	January	February	March	FYTD
Actual	trains	546	485	537	4591
Scheduled	trains	664	548	640	5851

No of Tonnes to be Delivered to the Terminal

Actual	tonnes	5,297,870	4,714,067	5,225,945	49,744,586
Scheduled	tonnes	6,507,200	5,370,400	6,272,000	57,339,800

Inloading Performance

Average Terminal Unload Time

hrs:min 2:17 2:16 2:21 2:13

Average Train Unload Time

hrs:min 1:56 1:55 2:00 1:52

Yard Performance

Average Stock Build Time / Parcel

days 2.4 3.5 2.7 2.7

Average Stock Residence Time / Parcel

days 1.8 3.0 1.9 1.6

Outloading 1 Performance - L5

Utilisation

% 38.3% 67.6% 67.0% 62.3%

Average Outloading Rate

tph 4386 3773 4205 4441

Outloading 2 Performance - L6

Utilisation

% 49.5% 73.3% 68.2% 56.4%

Average Outloading Rate

tph 4437 4171 4562 4409

Outloading 3 Performance - L15

Utilisation

% 65.4% 73.6% 84.6% 81.6%

Average Outloading Rate

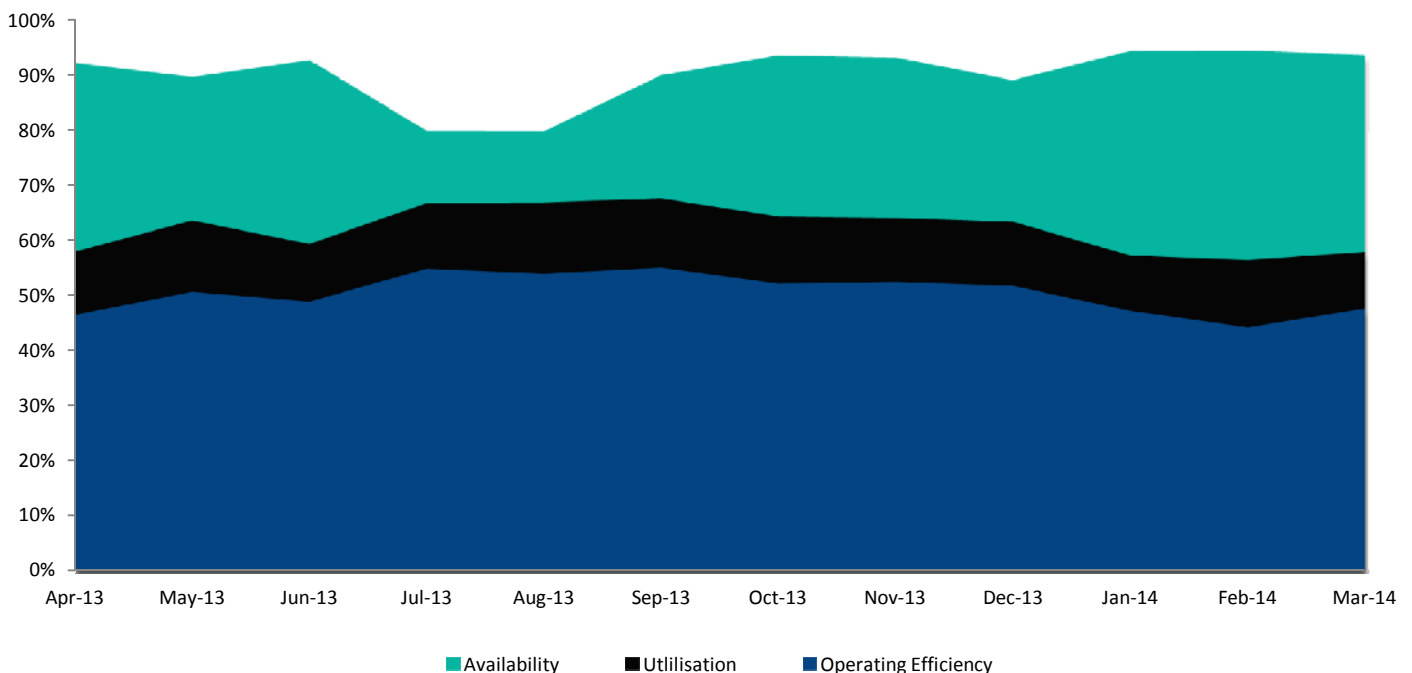
tph 4644 4027 4293 4748

*** Utilisation is a measurement of an entire system string. e.g. Outloading 1 to Shiploader 1.*

Average Outloading Rates

Handy	tph	2587	2995	0	3093
Panamax	tph	4410	3767	3956	4328
Japmax	tph	4447	4378	4347	4714
Cape	tph	4753	4000	4438	4665

Operating Efficiency Inloading



Performance Indicators

Operational Performance

Environmental Licence Performance

	Per Qtr	December	January	February	FYTD
Dust Deposition Exceedance	Nil	Nil	Nil	Nil	1
Total Suspended Particulates Exceedance	Nil	Nil	Nil	Nil	Nil
Noise Levels Exceedance	Nil	Nil	Nil	Nil	Nil

NB: Receipt of validated noise and dust deposition data is generally one month behind.

Vessel Performance

Number of Vessels

Vessel Mix

	Units	January	February	March	FYTD
Handy	Ships	4	3	0	37
Panamax	Ships	7	9	6	75
Japmax	Ships	15	12	19	157
Cape	Ships	18	22	22	202

Number of Parcels Per Vessel

Handy	parcels/vessel	1.3	1.0	0.0	1.1
Panamax	parcels/vessel	1.7	1.1	1.2	1.2
Japmax	parcels/vessel	1.1	1.0	1.1	1.2
Cape	parcels/vessel	2.7	2.6	2.6	2.4

Vessel Mix

Handy	%	3.3%	2.4%	0.0%	3.2%
Panamax	%	9.9%	12.3%	6.6%	10.2%
Japmax	%	24.2%	17.9%	28.5%	25.2%
Cape	%	62.5%	67.3%	64.9%	61.4%

Total Tonnes

t	4,728,955	5,134,673	5,114,794	49,275,364
---	-----------	-----------	-----------	------------

Vessel Queuing

Average Daily Total Vessels in Queue	Vessels	16.9	26.9	26.4	21.9
Average Daily Vessels with Unavailable Cargo	Vessels	11.4	7.4	5.4	6.6
Average Days at Anchor	days	8.1	20.0	16.8	12.3

*** Unavailable Cargo: Any vessel in the queue that does not have all parcels/products available at the mine/s.*

Operating Efficiency Outloading

