

Performance Indicators

Operational Performance

System Delivery

	Units	January	February	March	YTD	
No of Trains Delivered to the Terminal	Actual	trains	594	484	574	5127
	Scheduled	trains	662	642	623	5686
No of Tonnes to be Delivered to the Terminal	Actual	tonnes	5,842,364	4,704,316	5,634,078	50,430,497
	Scheduled	tonnes	6,487,600	6,291,600	6,105,400	55,722,800

Inloading Performance

Average Terminal Unload Time	hrs:min	2:16	2:29	2:20	2:15
Average Train Unload Time	hrs:min	1:55	2:07	1:58	1:53

Yard Performance

Average Stock Build Time / Parcel	days	2.5	3.2	3.3	3.0
Average Stock Residence Time / Parcel	days	2.0	2.6	2.2	2.2

Outloading 1 Performance - L5

Utilisation	%	50.1%	59.4%	71.7%	61.7%
Average Outloading Rate	tph	4441	3892	4147	4415

Outloading 2 Performance - L6

Utilisation	%	57.1%	63.1%	65.4%	58.6%
Average Outloading Rate	tph	4756	4313	3770	4502

Outloading 3 Performance - L15

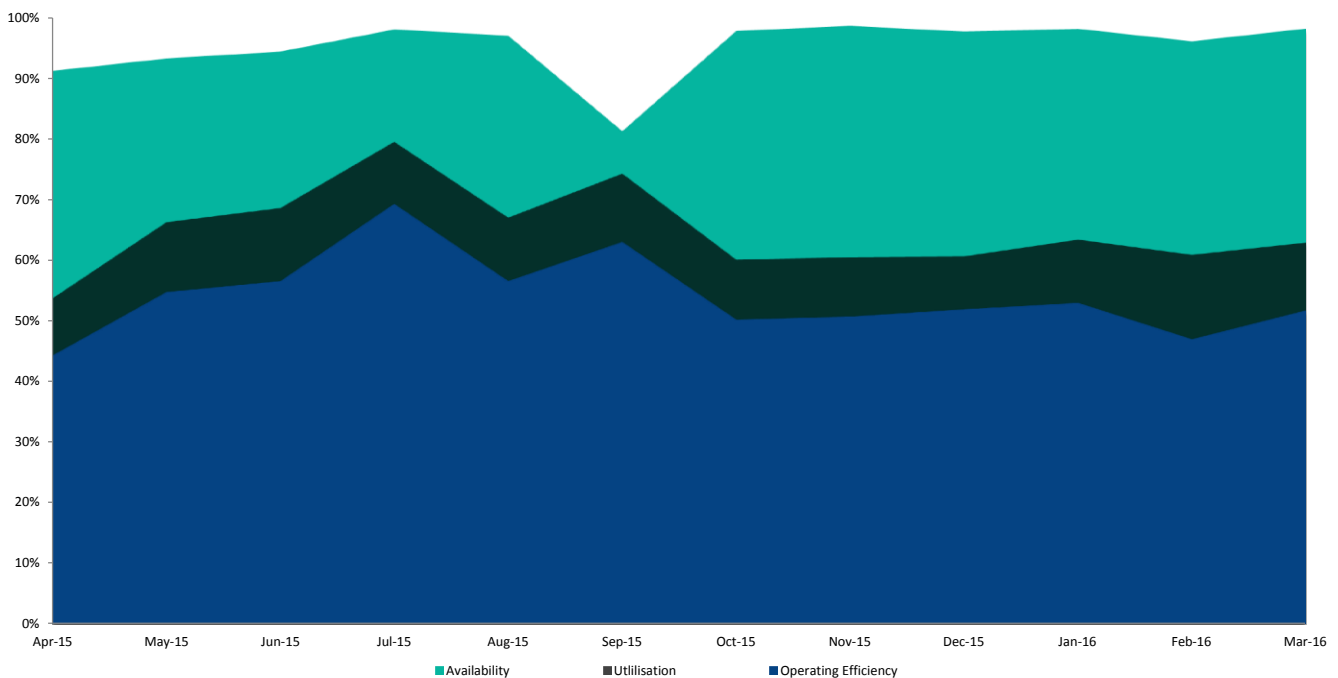
Utilisation	%	72.8%	61.8%	79.5%	78.3%
Average Outloading Rate	tph	4816	4493	4325	4963

***Utilisation is a measurement of an entire system string. e.g. Outloading 1 to Shiploader 1.*

Average Outloading Rates

Handy	tph	3236	3709	2519	3181
Panamax	tph	4111	3722	3404	3980
Japmax	tph	4670	4390	3984	4684
Cape	tph	4842	4435	4346	4851

Operating Efficiency Inloading



Performance Indicators

Operational Performance

Environmental Licence Performance

	Per Qtr	December	January	February	YTD
Dust Deposition Exceedance	Nil	Nil	Nil	Nil	Nil
Total Suspended Particulates Exceedance	Nil	Nil	Nil	Nil	Nil
Noise Levels Exceedance	Nil	Nil	Nil	Nil	Nil

NB: Receipt of validated noise and dust deposition data is generally one month behind.

Vessel Performance

Number of Vessels

Vessel Mix

	Units	January	February	March	YTD
Handy	Ships	2	3	3	23
Panamax	Ships	7	12	8	75
Japmax	Ships	23	10	14	164
Cape	Ships	23	22	27	223

Number of Parcels Per Vessel

Handy	parcels/vessel	1.0	1.0	2.0	1.1
Panamax	parcels/vessel	1.7	1.3	1.3	1.3
Japmax	parcels/vessel	1.4	1.2	1.1	1.2
Cape	parcels/vessel	2.3	2.0	1.8	2.0

Vessel Mix

Handy	%	1.5%	3.0%	2.8%	2.0%
Panamax	%	7.7%	17.1%	9.5%	9.6%
Japmax	%	32.4%	14.8%	19.6%	25.8%
Cape	%	58.5%	65.1%	68.1%	62.6%

Total Tonnes

t	5,716,644	4,718,275	5,415,584	50,052,239
---	-----------	-----------	-----------	------------

Vessel Queuing

Average Daily Total Vessels in Queue	Vessels	5.7	10.9	8.9	8.4
Average Daily Vessels with Unavailable Cargo	Vessels	1.3	4.0	2.6	2.3
Average Days at Anchor	days	3.8	5.6	6.2	5.0

*** Unavailable Cargo: Any vessel in the queue that does not have all parcels/products available at the mine/s.*

***Weightometer tonnes are used in this report and cut-offs are last wagon and last coal for inloading and outloading respectively*

Operating Efficiency Outloading

