

Performance Indicators

Operational Performance

System Delivery

No of Trains Delivered to the Terminal

	Units	July	August	September	FYTD
Actual	trains	374	536	538	1448
Scheduled	trains	475	548	554	1577

No of Tonnes to be Delivered to the Terminal

Actual	tonnes	3,697,997	5,251,177	5,281,210	14,230,384
Scheduled	tonnes	4,655,000	5,370,400	5,429,200	15,454,600

Inloading Performance

Average Terminal Unload Time

hrs:min 2:19 2:15 2:17 2:17

Average Train Unload Time

hrs:min 1:54 1:51 1:52 1:52

Yard Performance

Average Stock Build Time / Parcel

days 3.4 3.4 3.4 2.9

Average Stock Residence Time / Parcel

days 2.7 2.7 2.7 2.2

Outloading 1 Performance - L5

Utilisation

% 53.1% 78.1% 74.6% 70.1%

Average Outloading Rate

tph 4301 4516 4137 4329

Outloading 2 Performance - L6

Utilisation

% 0.0% 59.9% 68.1% 47.2%

Average Outloading Rate

tph 0 4230 4269 4250

Outloading 3 Performance - L15

Utilisation

% 65.1% 82.3% 88.0% 80.0%

Average Outloading Rate

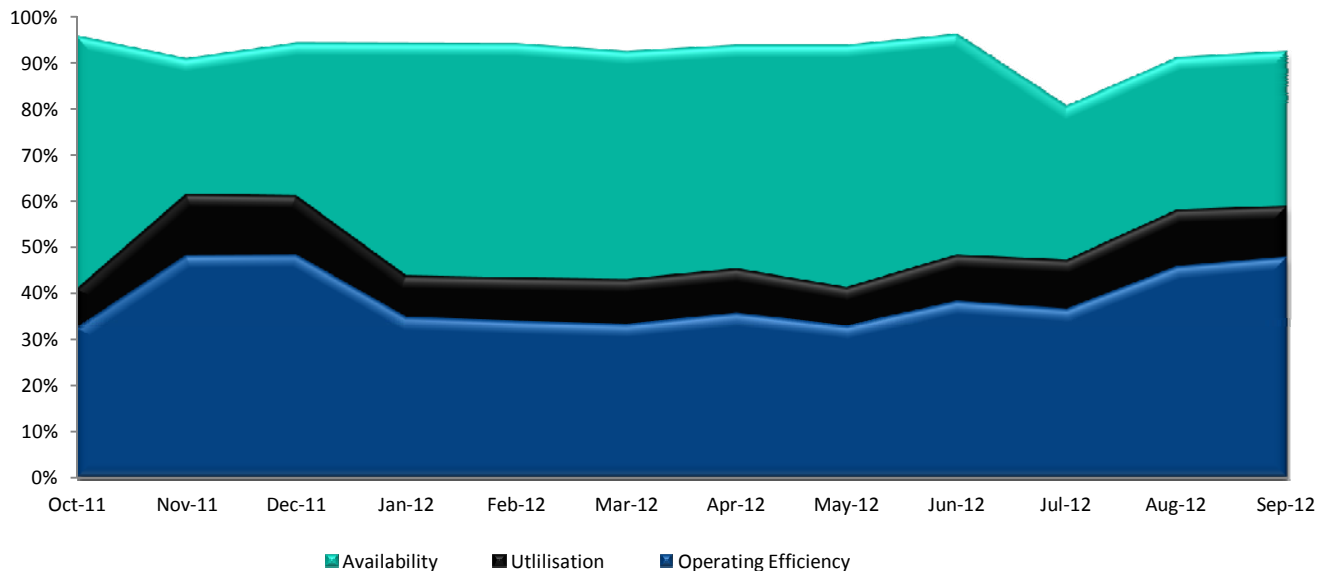
tph 4487 4427 4491 4473

*** Utilisation is a measurement of an entire system string. e.g. Outloading 1 to Shiploader 1.*

Average Outloading Rates

Handy	tph	3308	3380	3474	3359
Panamax	tph	4118	4109	4104	4112
Japmax	tph	5131	4880	4466	4721
Cape	tph	4507	4474	4346	4429

Operating Efficiency Inloading



Performance Indicators

Operational Performance

Environmental Licence Performance

	Per Qtr	June	July	August	FYTD
Dust Deposition Exceedance	Nil	Nil	Nil	Nil	Nil
Total Suspended Particulates Exceedance	Nil	Nil	Nil	Nil	Nil
Noise Levels Exceedance	Nil	Nil	Nil	Nil	Nil

NB: Receipt of validated noise and dust deposition data is generally one month behind.

Vessel Performance

Number of Vessels

Vessel Mix

	Units	July	August	September	FYTD
Handy	Ships	3	3	1	7
Panamax	Ships	15	10	10	35
Japmax	Ships	7	6	15	28
Cape	Ships	13	25	26	64

Number of Parcels Per Vessel

Handy	parcels/vessel	1.0	1.0	1.0	1.0
Panamax	parcels/vessel	1.4	1.2	1.1	1.3
Japmax	parcels/vessel	1.1	1.2	1.1	1.1
Cape	parcels/vessel	2.4	2.7	2.8	2.7

Vessel Mix

Handy	%	3.8%	2.4%	0.8%	2.2%
Panamax	%	30.5%	12.3%	12.8%	17.3%
Japmax	%	15.8%	9.2%	19.7%	15.0%
Cape	%	49.9%	76.1%	66.8%	65.5%

Total Tonnes

t	3,743,516	4,943,079	5,472,423	14,159,018
---	-----------	-----------	-----------	------------

Vessel Queuing

Average Daily Total Vessels in Queue	Vessels	16.1	15.3	7.1	13.0
Average Daily Vessels with Unavailable Cargo	Vessels	10.3	9.7	0.6	6.7
Average Days at Anchor	days	13.6	12.0	5.8	10.0

*** Unavailable Cargo: Any vessel in the queue that does not have all parcels/products available at the mine/s.*

Operating Efficiency Outloading

