

# Performance Indicators

## Operational Performance

### System Delivery

	Units	August	September	October	FYTD
No of Trains Delivered to the Terminal					
Actual	trains	568	613	633	1746
Scheduled	trains	662	670	684	2653

No of Tonnes to be Delivered to the Terminal

Actual	tonnes	5,527,928	5,885,892	6,096,396	22,996,199
Scheduled	tonnes	6,487,600	6,566,000	6,703,200	25,999,400

### Inloading Performance

Average Terminal Unload Time	hrs:min	2:08	2:12	2:10	2:10
Average Train Unload Time	hrs:min	1:46	1:50	1:47	1:48

### Yard Performance

Average Stock Build Time / Parcel	days	2.9	2.4	2.8	2.6
Average Stock Residence Time / Parcel	days	1.4	0.8	1.3	1.1

### Outloading 1 Performance - L5

Utilisation	%	79.7%	63.2%	62.7%	68.0%
Average Outloading Rate	tph	4634	4642	4719	4663

### Outloading 2 Performance - L6

Utilisation	%	0.0%	62.9%	67.5%	46.6%
Average Outloading Rate	tph	0	4647	4621	4612

### Outloading 3 Performance - L15

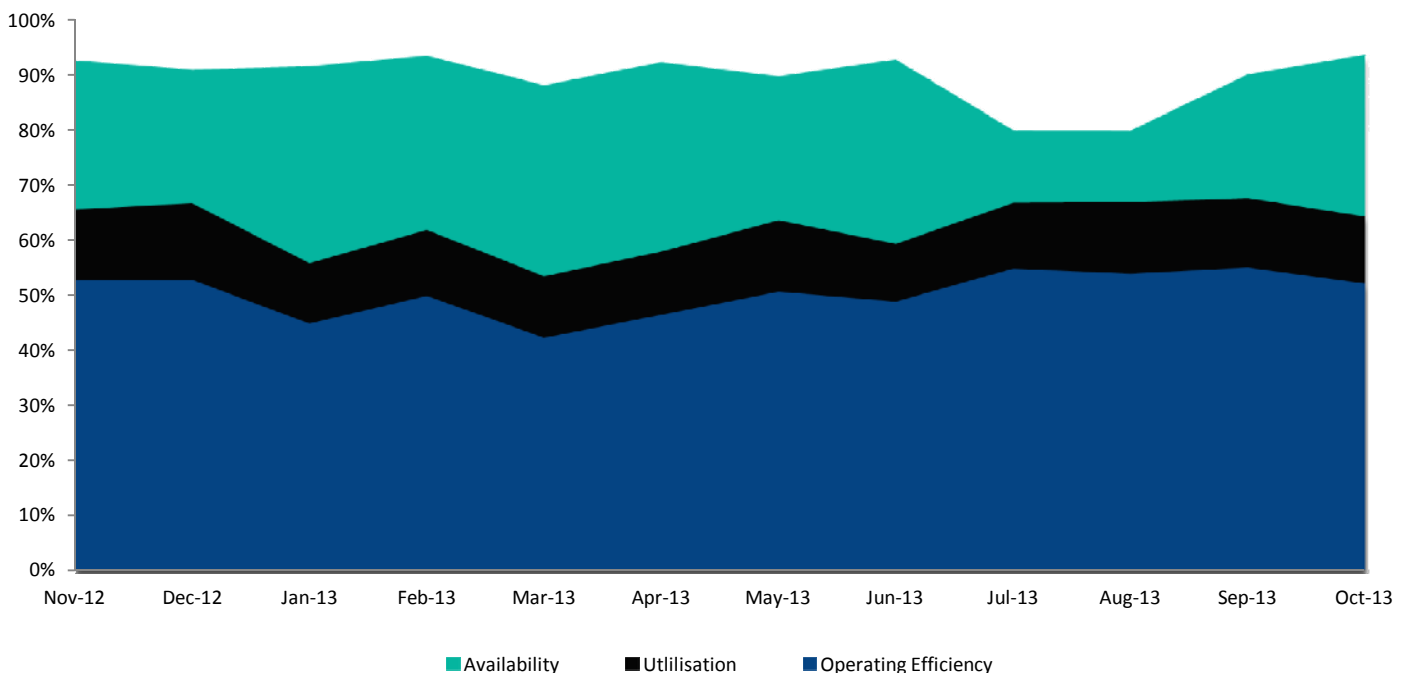
Utilisation	%	89.3%	80.0%	82.1%	82.6%
Average Outloading Rate	tph	5117	5275	4728	4959

\*\* Utilisation is a measurement of an entire system string. e.g. Outloading 1 to Shiploader 1.

### Average Outloading Rates

Handy	tph	3776	3305	3543	3290
Panamax	tph	4449	4857	4708	4553
Japmax	tph	5087	4983	4769	4857
Cape	tph	4966	4924	4741	4912

### Operating Efficiency Inloading



# Performance Indicators

## Operational Performance

### Environmental Licence Performance

	Per Qtr	July	August	September	FYTD
Dust Deposition Exceedance	Nil	Nil	Nil	Nil	Nil
Total Suspended Particulates Exceedance	Nil	Nil	Nil	Nil	Nil
Noise Levels Exceedance	Nil	Nil	Nil	Nil	Nil

*NB: Receipt of validated noise and dust deposition data is generally one month behind.*

### Vessel Performance

#### Number of Vessels

Units	August	September	October	FYTD
-------	--------	-----------	---------	------

#### Vessel Mix

Handy	Ships	3	4	5	18
Panamax	Ships	10	4	11	32
Japmax	Ships	18	16	25	76
Cape	Ships	24	30	17	93

### Number of Parcels Per Vessel

Handy	parcels/vessel	1.0	1.0	1.2	1.1
Panamax	parcels/vessel	1.0	1.0	1.4	1.2
Japmax	parcels/vessel	1.1	1.2	1.2	1.1
Cape	parcels/vessel	2.3	2.1	2.9	2.3

### Vessel Mix

Handy	%	2.6%	3.1%	3.7%	3.5%
Panamax	%	11.4%	4.8%	13.3%	9.5%
Japmax	%	25.9%	21.4%	34.5%	26.8%
Cape	%	60.1%	70.7%	48.5%	60.3%

### Total Tonnes

t	5,624,389	5,959,144	5,816,406	22,658,998
---	-----------	-----------	-----------	------------

### Vessel Queuing

Average Daily Total Vessels in Queue	Vessels	25.2	22.2	23.1	20.6
Average Daily Vessels with Unavailable Cargo	Vessels	8.3	2.9	1.7	4.2
Average Days at Anchor	days	12.5	14.7	12.5	11.6

*\*\* Unavailable Cargo: Any vessel in the queue that does not have all parcels/products available at the mine/s.*

### Operating Efficiency Outloading

