

Performance Indicators

Operational Performance

System Delivery

	Units	July	August	September	YTD	
No of Trains Delivered to the Terminal	Actual	trains	558	603	644	1805
	Scheduled	trains	645	634	720	1999
No of Tonnes to be Delivered to the Terminal	Actual	tonnes	5,438,015	5,955,773	6,386,082	17,779,870
	Scheduled	tonnes	6,514,500	6,403,400	7,272,000	20,189,900

Inloading Performance

Average Terminal Unload Time	hrs:min	2:11	2:05	2:18	2:12
Average Train Unload Time	hrs:min	1:49	1:42	1:54	1:49

Yard Performance

Average Build Time / Parcel	days	3.4	3.2	3.4	3.3
Average Residence Time / Parcel	days	2.5	2.2	2.1	2.3

Outloading 1 Performance - L5

Utilisation	%	49.4%	78.4%	74.5%	67.5%
Average Outloading Rate	tph	4180	4088	4429	4314

Outloading 2 Performance - L6

Utilisation	%	57.2%	79.4%	72.3%	69.7%
Average Outloading Rate	tph	4945	4616	4429	4646

Outloading 3 Performance - L15

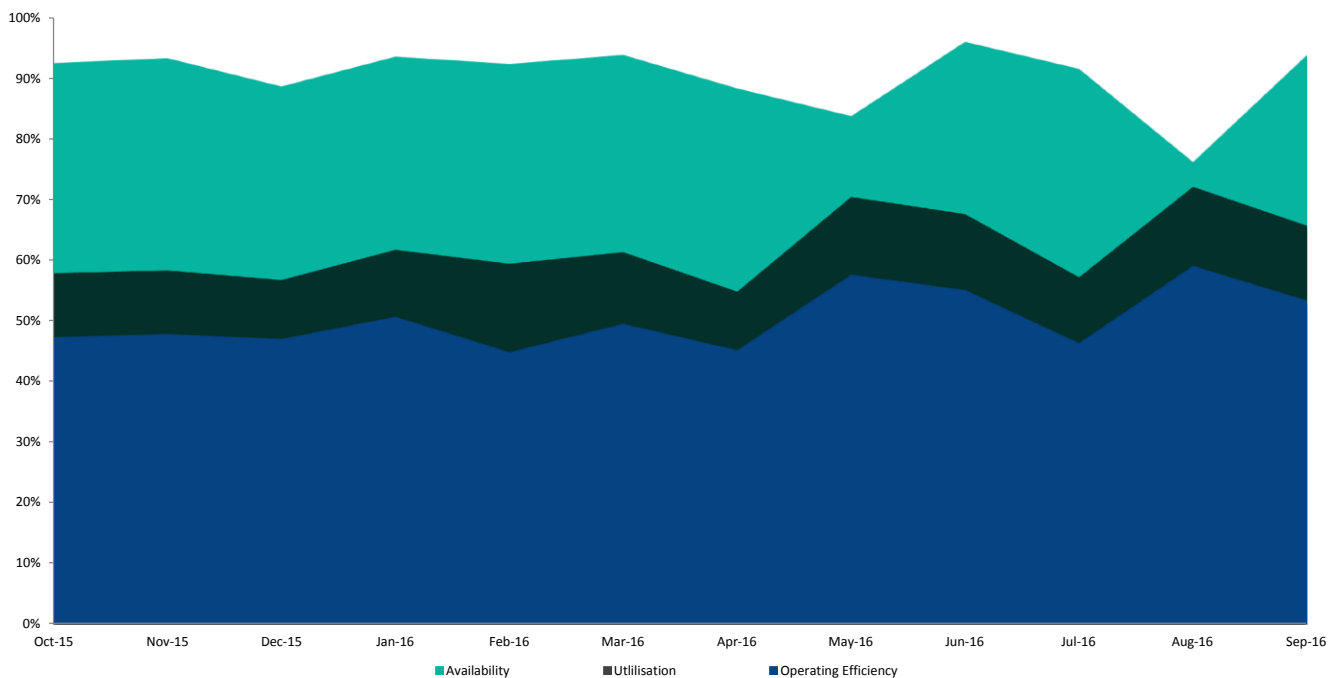
Utilisation	%	60.7%	84.3%	85.4%	76.8%
Average Outloading Rate	tph	5376	4736	4991	4998

***Utilisation is a measurement of an entire system string. e.g. Outloading 1 to Shiploader 1.*

Average Outloading Gross Rates

Handy	tph	3150	2808	0	3072
Panamax	tph	4507	4529	3926	4322
Japmax	tph	5010	4510	4618	4685
Cape	tph	5358	4788	4715	4910

Operating Efficiency Inloading



Performance Indicators

Operational Performance

Environmental Licence Performance

	Per Qtr	June	July	August	YTD
Dust Deposition Exceedance	Nil	Nil	Nil	Nil	Nil
Total Suspended Particulates Exceedance	Nil	Nil	Nil	Nil	Nil
Noise Levels Exceedance	Nil	Nil	Nil	Nil	Nil

NB: Receipt of validated noise and dust deposition data is generally one month behind.

Vessel Performance

Number of Vessels

Vessel Mix

	Units	July	August	September	YTD
Handy	Ships	9	3	0	12
Panamax	Ships	7	8	7	22
Japmax	Ships	19	19	30	68
Cape	Ships	22	25	29	76

Number of Parcels Per Vessel

Handy	parcels/vessel	1.1	1.0	1.3	1.1
Panamax	parcels/vessel	1.3	1.4	1.8	1.3
Japmax	parcels/vessel	1.1	1.1	1.5	1.1
Cape	parcels/vessel	1.9	2.5	2.2	2.2

Vessel Mix

Handy	%	7.5%	1.8%	0.0%	2.8%
Panamax	%	9.0%	9.3%	6.6%	8.2%
Japmax	%	25.8%	24.5%	34.8%	28.7%
Cape	%	57.7%	64.4%	58.7%	60.3%

Total Tonnes

t	5,428,029	5,910,534	6,788,380	18,126,943
---	-----------	-----------	-----------	------------

Vessel Queuing

Average Daily Total Vessels in Queue	Vessels	13.2	12.5	10.6	12.1
Average Daily Vessels with Unavailable Cargo	Vessels	6.3	2.3	2.2	4.4
Average Days at Anchor	days	8.1	8.6	5.1	7.1

*** Unavailable Cargo: Any vessel in the queue that does not have all parcels/products available at the mine/s.*

***Weightometer tonnes are used in this report and cut-offs are last wagon and last coal for inloading and outloading respectively*

Operating Efficiency Outloading

