



Dalrymple Bay Coal Terminal Performance Indicators

Oct 2009 to Dec 2009

System Delivery

No of Trains Delivered to the Terminal

| | Units | October | November | December | YEJ 10 |
|-----------|--------|---------|----------|----------|--------|
| Actual | trains | 569 | 575 | 552 | 3305 |
| Scheduled | trains | 671 | 644 | 641 | 3771 |

No of Tonnes to be Delivered to the Terminal

| | | | | | |
|-----------|--------|-----------|-----------|-----------|------------|
| Actual | tonnes | 5,411,341 | 5,540,434 | 5,316,396 | 31,939,131 |
| Scheduled | tonnes | 6,575,800 | 6,311,200 | 6,281,800 | 36,955,800 |

Inloading Performance

Combined Avg Terminal Unload Time

hours 2.39 2.38 2.45 2.44

Combined Avg Train Unload Time

hours 2.06 2.05 2.09 2.09

Yard Performance

Average Stock Build Time / Parcel

hours 2.9 2.4 2.4 2.4

Average Stock Residence Time / Parcel

hours 1.3 1.4 1.5 1.7

Outloading 1 Performance - L5

Utilisation

hours 64.8% 82.3% 64.5% 73.9%

Average Outloading Rate

hours 4176 4122 4418 4044

Outloading 2 Performance - L6

Utilisation

hours 64.3% 66.4% 64.1% 71.2%

Average Outloading Rate

hours 4305 3707 4245 3849

Outloading 3 Performance - L15

Utilisation

hours 79.3% 70.9% 65.5% 74.9%

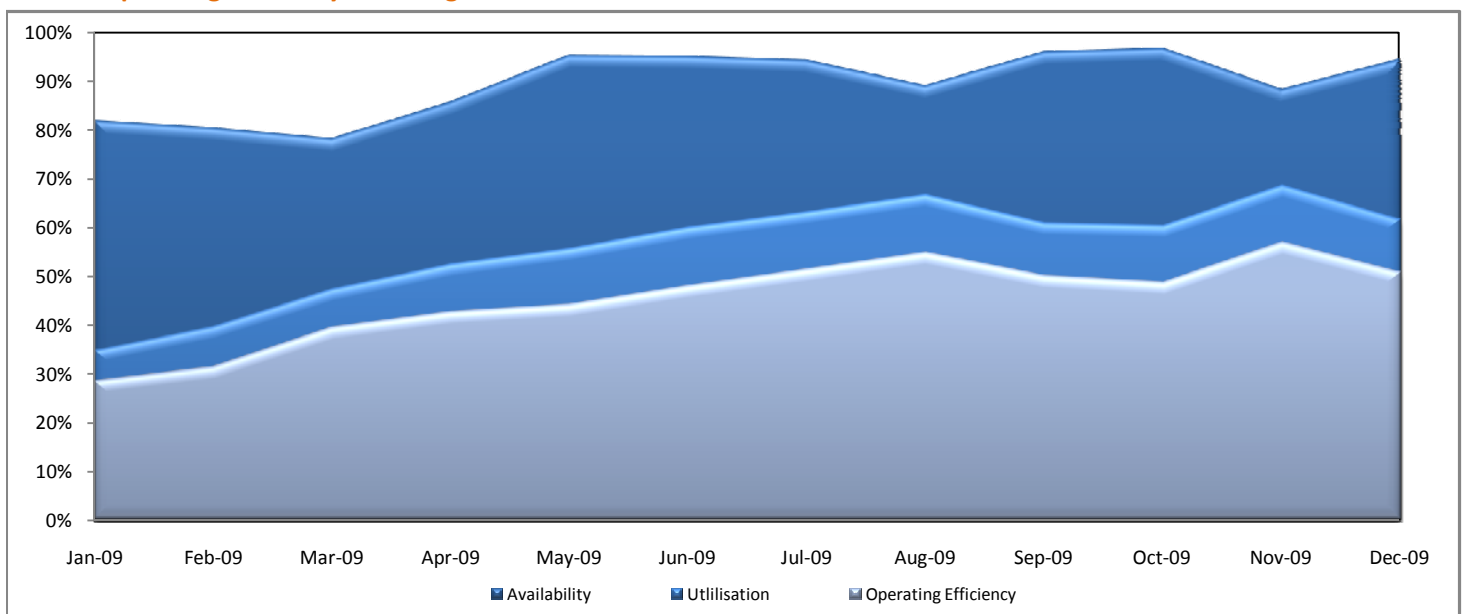
Average Outloading Rate

hours 3581 4289 3970 3544

Average Outloading Rates

| | | | | | |
|---------|-----|------|------|------|------|
| Handy | tph | 2557 | 2675 | 2686 | 2615 |
| Panamax | tph | 3604 | 4064 | 4329 | 3650 |
| Japmax | tph | 4177 | 4245 | 4859 | 3944 |
| Cape | tph | 4223 | 4097 | 4378 | 4137 |

Operating Efficiency Inloading



Dalrymple Bay Coal Terminal Performance Indicators

Oct 2009 to Dec 2009

Vessel Performance

Number of Vessels

Units October November December YEJ 10

Vessel Mix

| | | | | | |
|---------|-------|----|----|----|-----|
| Handy | Ships | 10 | 15 | 9 | 59 |
| Panamax | Ships | 26 | 28 | 27 | 177 |
| Japmax | Ships | 14 | 15 | 7 | 72 |
| Cape | Ships | 13 | 10 | 18 | 77 |

Number of Parcels Per Vessel

| | | | | | |
|---------|----------------|-----|-----|-----|-----|
| Handy | parcels/vessel | 1.1 | 1.1 | 1.0 | 1.1 |
| Panamax | parcels/vessel | 1.5 | 1.2 | 1.4 | 1.3 |
| Japmax | parcels/vessel | 1.6 | 1.3 | 1.1 | 1.3 |
| Cape | parcels/vessel | 2.6 | 3.2 | 3.3 | 3.0 |

Vessel Mix

| | | | | | |
|---------|---|-------|-------|-------|-------|
| Handy | % | 9.0% | 13.0% | 7.9% | 9.0% |
| Panamax | % | 33.6% | 34.6% | 34.3% | 37.4% |
| Japmax | % | 21.7% | 24.0% | 10.5% | 17.8% |
| Cape | % | 35.7% | 28.4% | 47.4% | 35.7% |

Total Tonnes

| | | | | |
|---|-----------|-----------|-----------|------------|
| t | 5,474,478 | 5,421,032 | 5,499,197 | 32,328,256 |
|---|-----------|-----------|-----------|------------|

Vessel Queuing

| | | | | | |
|--------------------------------------|---------|------|------|------|------|
| Average Daily Total Vessels in Queue | Vessels | 67.6 | 53.4 | 60.0 | 52.6 |
| Average Daily Number of Dead Ships | Vessels | 0.0 | 0.0 | 0.0 | 0.0 |
| Average Days at Anchor | days | 29.4 | 30.3 | 35.4 | 26.3 |

Operating Efficiency Outloading

