

# Performance Indicators

## Operational Performance

### System Delivery

No of Trains Delivered to the Terminal

	Units	October	November	December	FYTD
Actual	trains	527	627	606	3208
Scheduled	trains	552	672	698	2801

No of Tonnes to be Delivered to the Terminal

Actual	tonnes	5,225,955	6,103,390	5,830,002	31,375,629
Scheduled	tonnes	5,409,600	6,585,600	6,840,400	27,449,800

### Inloading Performance

Average Terminal Unload Time

hrs:min      2:11      2:14      2:22      2:16

Average Train Unload Time

hrs:min      1:47      1:50      1:57      1:52

### Yard Performance

Average Stock Build Time / Parcel

days      3.4      3.4      3.4      2.9

Average Stock Residence Time / Parcel

days      2.7      2.7      2.7      2.0

### Outloading 1 Performance - L5

Utilisation

%      41.3%      89.0%      66.2%      68.2%

Average Outloading Rate

tph      4596      3471      4156      4298

### Outloading 2 Performance - L6

Utilisation

%      67.5%      86.2%      65.0%      61.0%

Average Outloading Rate

tph      4688      4596      4307      4452

### Outloading 3 Performance - L15

Utilisation

%      79.0%      95.2%      77.1%      81.7%

Average Outloading Rate

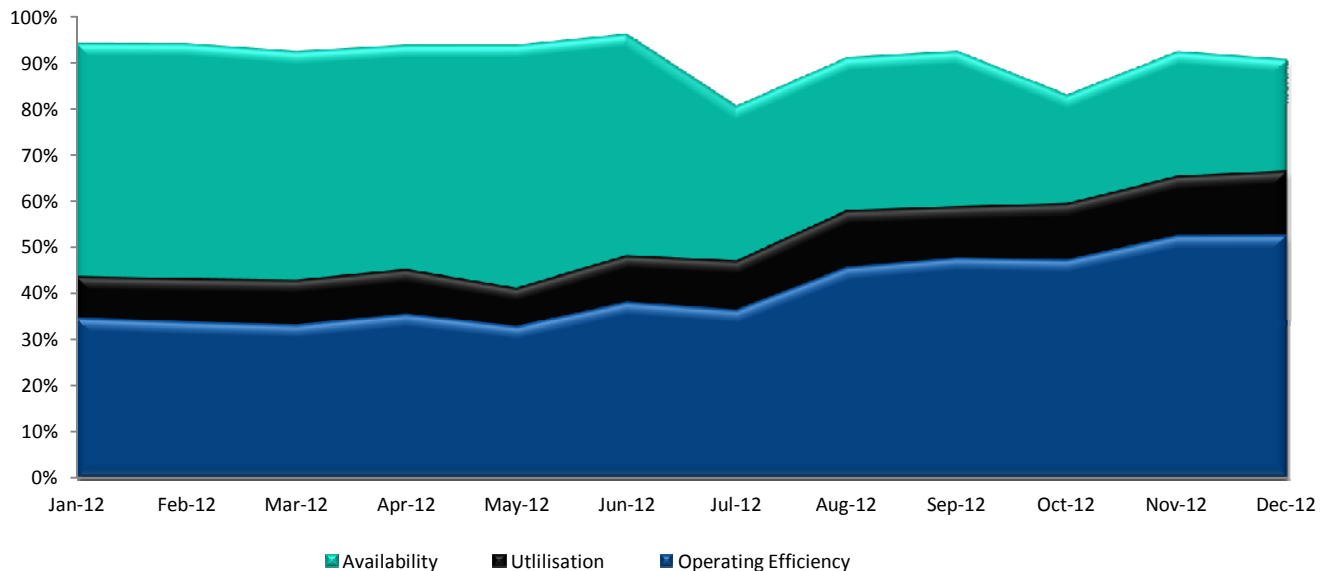
tph      4975      4940      4765      4697

*\*\* Utilisation is a measurement of an entire system string. e.g. Outloading 1 to Shiploader 1.*

### Average Outloading Rates

Handy	tph	0	4272	3569	3597
Panamax	tph	4693	5156	3348	4069
Japmax	tph	4654	4340	4445	4540
Cape	tph	4865	4847	4595	4598

### Operating Efficiency Inloading



# Performance Indicators

## Operational Performance

### Environmental Licence Performance

	Per Qtr	September	October	November	FYTD
Dust Deposition Exceedance	Nil	Nil	Nil	Nil	Nil
Total Suspended Particulates Exceedance	Nil	Nil	Nil	Nil	Nil
Noise Levels Exceedance	Nil	Nil	Nil	Nil	Nil

*NB: Receipt of validated noise and dust deposition data is generally one month behind.*

### Vessel Performance

#### Number of Vessels

Units	October	November	December	FYTD
-------	---------	----------	----------	------

#### Vessel Mix

Handy	Ships	0	1	2	9
Panamax	Ships	4	6	6	42
Japmax	Ships	14	14	21	84
Cape	Ships	22	27	28	146

### Number of Parcels Per Vessel

Handy	parcels/vessel	0.0	1.0	1.0	1.0
Panamax	parcels/vessel	1.0	1.2	1.0	1.1
Japmax	parcels/vessel	1.0	1.1	1.1	1.1
Cape	parcels/vessel	2.4	2.2	2.1	2.5

### Vessel Mix

Handy	%	0.0%	1.0%	1.4%	1.3%
Panamax	%	6.2%	7.1%	6.8%	9.0%
Japmax	%	22.0%	18.7%	26.2%	20.5%
Cape	%	71.7%	73.2%	65.6%	69.2%

### Total Tonnes

t	4,692,506	5,812,488	6,584,906	31,294,234
---	-----------	-----------	-----------	------------

### Vessel Queuing

Average Daily Total Vessels in Queue	Vessels	5.7	11.5	17.0	12.1
Average Daily Vessels with Unavailable Cargo	Vessels	2.6	0.7	9.0	4.7
Average Days at Anchor	days	3.3	7.0	13.1	12.3

*\*\* Unavailable Cargo: Any vessel in the queue that does not have all parcels/products available at the mine/s.*

### Operating Efficiency Outloading

