

Dalrymple Bay Coal Terminal Performance Indicators

Oct 2010 to Dec 2010

System Delivery

No of Trains Delivered to the Terminal

	Units	October	November	December	YEJ 10
Actual	trains	614	535	347	3208
Scheduled	trains	664	613	557	3781

No of Tonnes to be Delivered to the Terminal

Actual	tonnes	5,917,047	5,164,922	3,359,458	31,021,010
Scheduled	tonnes	6,507,200	6,007,400	5,458,600	37,053,800

Inloading Performance

Combined Avg Terminal Unload Time

hrs:min	2:18	2:14	2:19	2:19
---------	------	------	------	------

Combined Avg Train Unload Time

hrs:min	1:59	1:55	2:00	2:00
---------	------	------	------	------

Yard Performance

Average Stock Build Time / Parcel

days	3.6	3.6	3.6	3.0
------	-----	-----	-----	-----

Average Stock Residence Time / Parcel

days	1.0	1.0	1.0	1.7
------	-----	-----	-----	-----

Outloading 1 Performance - L5

Utilisation

%	54.5%	47.3%	51.5%	51.8%
---	-------	-------	-------	-------

Average Outloading Rate

tph	5012	4422	3555	4419
-----	------	------	------	------

Outloading 2 Performance - L6

Utilisation

%	54.8%	67.1%	43.2%	61.9%
---	-------	-------	-------	-------

Average Outloading Rate

tph	4821	4392	3835	4313
-----	------	------	------	------

Outloading 3 Performance - L15

Utilisation

%	61.7%	70.0%	57.9%	73.8%
---	-------	-------	-------	-------

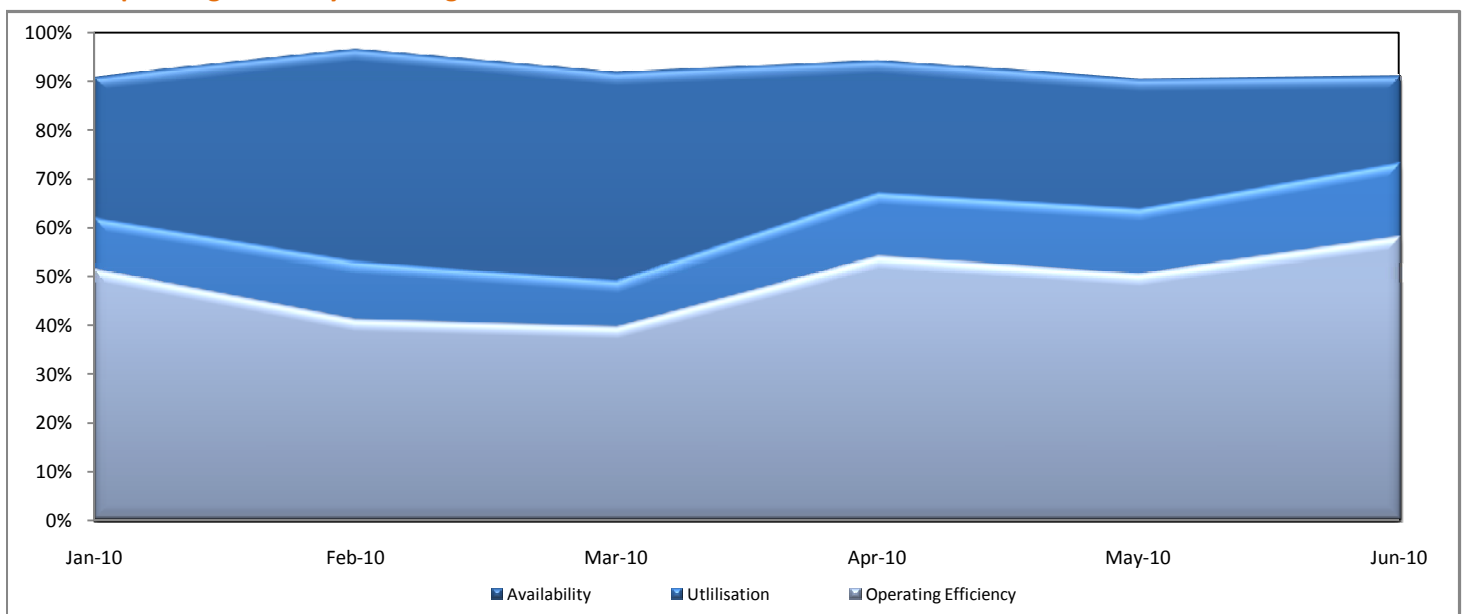
Average Outloading Rate

tph	4898	4988	4381	4728
-----	------	------	------	------

Average Outloading Rates

Handy	tph	3255	3030	2818	3250
Panamax	tph	4345	3643	3564	4107
Japmax	tph	4780	4127	4137	4422
Cape	tph	4918	4631	3989	4551

Operating Efficiency Inloading



Dalrymple Bay Coal Terminal Performance Indicators

Oct 2010 to Dec 2010

Vessel Performance

Number of Vessels

Units October November December YEJ 10

Vessel Mix

	Units	October	November	December	YEJ 10
Handy	Ships	3	4	4	33
Panamax	Ships	11	10	15	76
Japmax	Ships	9	15	7	68
Cape	Ships	28	19	15	126

Number of Parcels Per Vessel

	Units	October	November	December	YEJ 10
Handy	parcels/vessel	1.0	1.3	1.3	1.1
Panamax	parcels/vessel	1.4	1.1	1.1	1.2
Japmax	parcels/vessel	1.3	1.3	1.6	1.3
Cape	parcels/vessel	2.8	3.2	2.7	3.0

Vessel Mix

	Units	October	November	December	YEJ 10
Handy	%	2.4%	3.2%	4.8%	4.8%
Panamax	%	12.5%	13.8%	24.3%	16.2%
Japmax	%	12.1%	24.3%	13.9%	18.3%
Cape	%	73.0%	58.7%	57.1%	60.8%

Total Tonnes

	Units	October	November	December	YEJ 10
	t	6,119,237	5,107,700	3,881,332	31,520,654

Vessel Queuing

	Units	October	November	December	YEJ 10
Average Daily Total Vessels in Queue	Vessels	38.3	26.0	39.0	42.5
Average Daily Vessels with Unavailable Cargo	Vessels	26.9	20.7	29.7	29.8
Average Days at Anchor	days	28.0	22.3	18.6	27.6

** Unavailable Cargo: Any vessel in the queue that does not have all parcels/products available at the mine/s.

Operating Efficiency Outloading

